

DIAGRAMA ARII UTILE ETAJ SUPERIOR

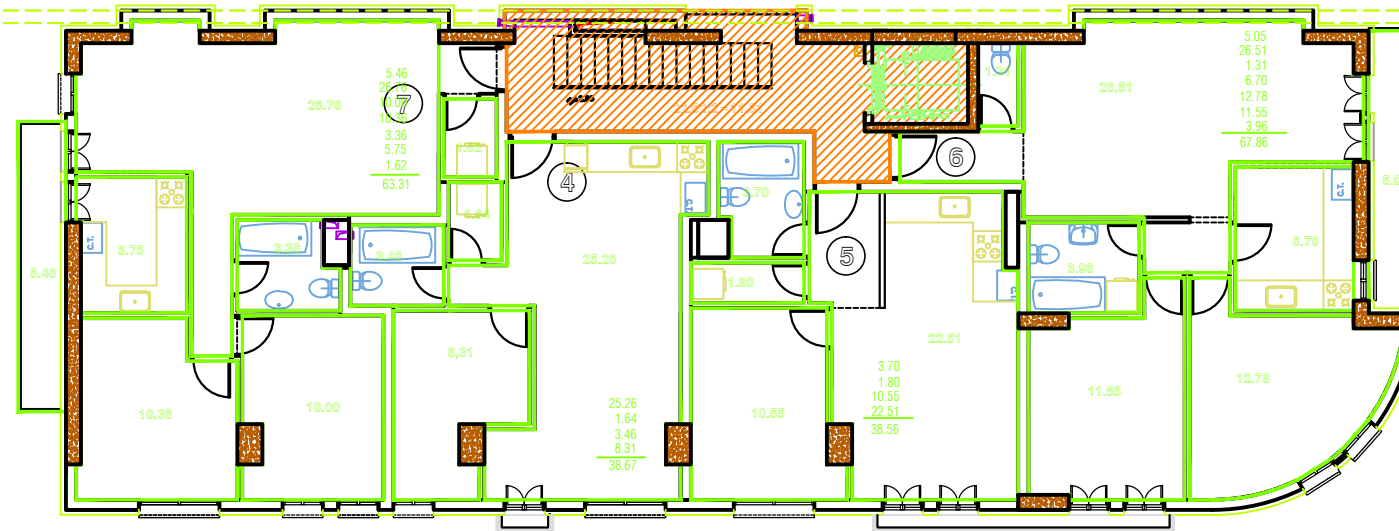


DIAGRAMA ARII UTILE ETAJE CURENTE

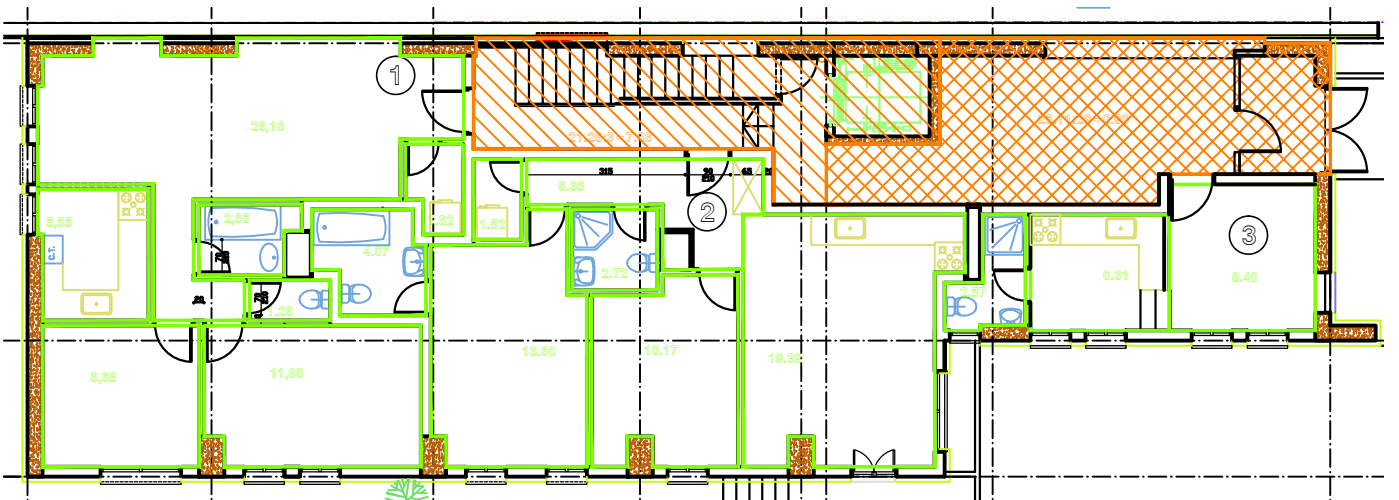



DIAGRAMA ARII UTILE PARTER

Apt.	Etaj	Camere	Arie Utila	Arie Construita	Arie Comuna	Arie Totala Apt.	Arie Totala
1	parter	3 camere	57.83	67.10	7.08	74.18	74.18
2	parter	3 camere	57.52	66.74	7.08	73.82	73.82
3	parter	1 camera	17.28	22.45	7.08	29.53	29.53
4	1-7	3 camere	63.31	74.36	$\frac{22.62 \cdot 4 = 5.66}{26.11 \cdot 29 = 0.90}$ 6.56	80.92	$80.92 \times 7 = 566.44$
5	1-7	garsoniera /2 camere	38.67	44.31	6.56	50.87	$50.87 \times 7 = 356.09$
6	1-7	2 camere	38.56	44.08	6.56	50.64	$50.64 \times 7 = 354.48$
7	1-7	3 camere	67.86	77.18	6.56	83.74	$83.74 \times 7 = 586.18$
8	8	2 camere	67.86	51.96	$\frac{22.62 \cdot 4 = 11.31}{26.11 \cdot 29 = 0.90}$ 12.21	64,17	64,17
9	8	3 camere	67.86	62,41	12.21	74.62	74.62

CONSTRUCTIE GRADUL I REZISTENTA LA FOC (conf. normativ P118/1999)
 CATEGORIA "C" DE IMPORTANTATA - NORMALA (conf. HGR nr. 766 / 1997))
 CLASA III DE IMPORTANTATA (conf. normativ P100-1 / 2006)

	sc MTIG Design srl Strada Raspanitiilor nr. 6, Bucuresti J40/11/087/06.07.2006		Beneficiar: S.C. ROYAL GROUP INVESTMENTS S.R.L.	proiect nr. 220/08
			Amplasament: str. Teleajen nr. 8, sector 2	
	sef proiect: arh. Raluca Popescu		scara 1:100	IMOBIL DE LOCUINTE DS+P+6E
proiectat: arh. S. BLANARIU		data 10/2014	DIAGRAMA APARTAMENTE ETAJ CURENT (1-7) PARTER si SUPERIOR	plansa nr. A41
desenat: arh. S. BLANARIU				